



**AVERBUCH REALTY**

## Scott Averbuch

Broker, Agent, Averbuch Realty  
7500 Memorial Parkway South Suite 122  
Huntsville, Alabama 35802-2297

[www.AverbuchRealty.com](http://www.AverbuchRealty.com)

Contact Scott

**256-656-3400**



**703 Read Drive, AL 35801**



Listing Price

**\$599,000**

MLS No: 1094202

Sq Ft: 5,814

Bedrooms: 5

Baths: 2/1/1

Prop Type: single family

County: MADISON

Area:

Subdivision: Monte Crest

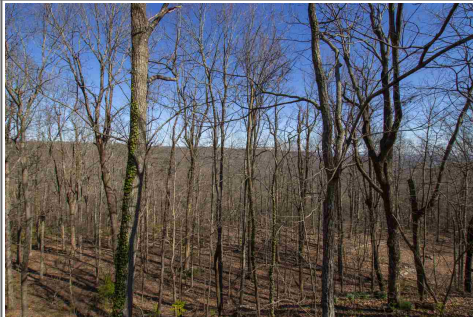
Schools: Monte Sano  
Elementary  
Huntsville  
Huntsville

Monte Sano Mtn! Winter Bluff View Home Located Beside Ms Elementary School & Around Corner From Ms Pool. 5700 Sf, 5 Br, 4 Ba, Master On Main Level W/walk In Closet & 9 Ft Ceilings, and Hickory Floors. The Kitchen Has Hickory Cabinets & Viking Brand Appl.'s Incl. Commercial Grade 6 Burner Gas Cooktop, Hood & Double Ovens & Walk In Pantry. Upstairs Offers 3 Br's, Bonus Space & 2 Storage Rooms Plus Walk In Attic Space. Just Off The Master Is A Study With A Wall Of Windows To Take In The View That Leads To An All Season Room To See The Mountain Views! 1600 Sf Is Semi-finished Basement Sf Too! High Quality Throughout-marvin Windows, Rinnai Tankless....

Picture

Features

QR Code



**Air Condition**

- Central 2

**Appliances**

- Grill Top, Double Oven, Dishwasher, Refrigerator, Tankless Water Heater, Gas Cook Top

**Construction**

- Fiber Cement Siding

**Fireplace**

- Two, WB Insert, Gas Log, Prefabricated

**Garage/Carport**

- Two Car Garage, Front Entry

**Heat**

- Central 2, Electric, Propane Gas



[www.averbuchrealty.com](http://www.averbuchrealty.com)

(256) 883-6600

[info@averbuchrealty.com](mailto:info@averbuchrealty.com)